

MOREnet partners with



You're invited to participate in our eduroam on-ramp pilot

We're excited to bring the eduroam initiative to our K-12 and library members **free of charge**! Our pilot program begins immediately with up to five members, and our current focus is K-12 schools and libraries. We plan to roll out to all interested K-12 and library members as soon as January. If you're interested in joining this exclusive pilot program, please reach out to info@more.net. Spots are highly limited!

What is eduroam?

Eduroam is a secure, global roaming wireless access service that enables Wi-Fi for students, educators, staff and researchers. Designed for the research and education community, the solution is based on the use of RADIUS network access servers, typically at each participating site. Eduroam allows students, faculty and staff to connect to the internet on your campus and at participating locations simply by opening their laptop or pulling out their smart device.

- No more searching for an open network and password to connect.
- Less risk of unintentionally connecting to an unsafe network.
- Less risk of unintentionally exposing information across an unsecured network.

Why should you subscribe to the eduroam on-ramp period with MOREnet?

Do you have faculty, staff, or students that travel to other districts, higher education institutions or libraries that need to connect to Wi-Fi while there? Do your students participate in dual credit programs or travel for MSHSAA events? If so, the eduroam roaming wi-fi service, built by and for education, can help.

From the user's perspective, eduroam is just "free Wi-Fi". Their device, whether school-issued or BYOD, automatically signs in. IT and security teams also like eduroam because:

- eduroam visitors agree to Terms of Use in advance
- Users aren't encouraged to rely on unknown or open (insecure) Wi-Fi networks
- Participating sites commit to follow the eduroam privacy and security standards

Expanding Access to Technology

10,000 hotspots worldwide

100+ countries

3,300 hotspots in the U.S.

New hotspots growing daily across academia and community anchor institutions

Plus, eduroam is based on supported and mature technology:

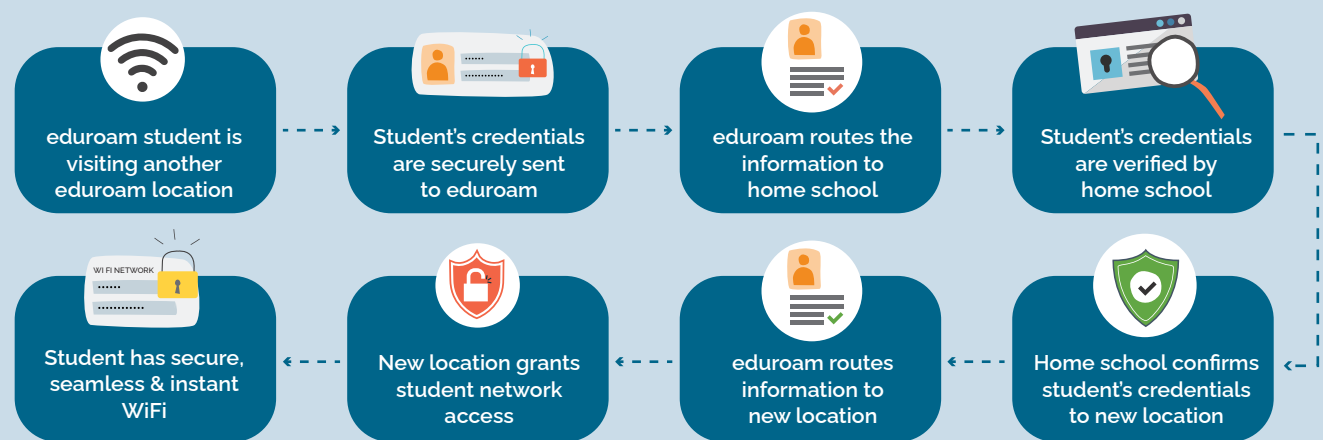
- Get "eduroam-ing" quickly with MOREnet support, training, and community-developed tools
- All major Operating Systems and common laptops, Chromebooks, tablets, and cell phones are supported
- Uses off the shelf Wi-Fi, 802.1x end-to-end encryption, RADIUS and a resilient roaming infrastructure

The eduroam value

K-12 schools and school districts

Enabling the eduroam service in your K-12 district provides many benefits to your school district's students, teachers, and administrators, that were previously only available to the higher education and research community.

- When your students and staff visit participating school districts, college/university campuses and tens of thousands of locations around the world, wireless internet access will "just work" as their credentials are securely sent to your own IT system.
- Specialty teachers and staff/administrators who frequently travel between schools won't need to switch wireless networks when traveling throughout the day.
- Reduces user support costs by reducing the need for supporting guest and native users. It can also reduce the time and effort needed to provision new users.
- Increased security, as authentication occurs in an encrypted tunnel between the user's device and their home institution.
- Works with MDM for filtering on district- issued devices.



Libraries

Your community relies on Internet access to succeed in school, participate in the modern marketplace and thrive in their future careers. Support your education community and contribute to Missouri's future workforce by offering eduroam at their favorite hangout spots.

- Enhances your venue and makes it more attractive to the eduroam community.
- Reduced staff hours supporting guest users, with no need for guest registration for eduroam visitors; they'll connect securely and automatically just like at their school or university.
- Expands secure connectivity for underserved populations in your community, helping to bridge the digital divide.
- Requires minimal IT resources, as most modern wireless equipment is already compatible with eduroam (we can help you find out). Once eduroam is enabled, IT support is minimal.